

Bill & Margaret Kurz Park

Scale 1:3,000 (1cm = 30m) Contours 5m

Metres 50 100

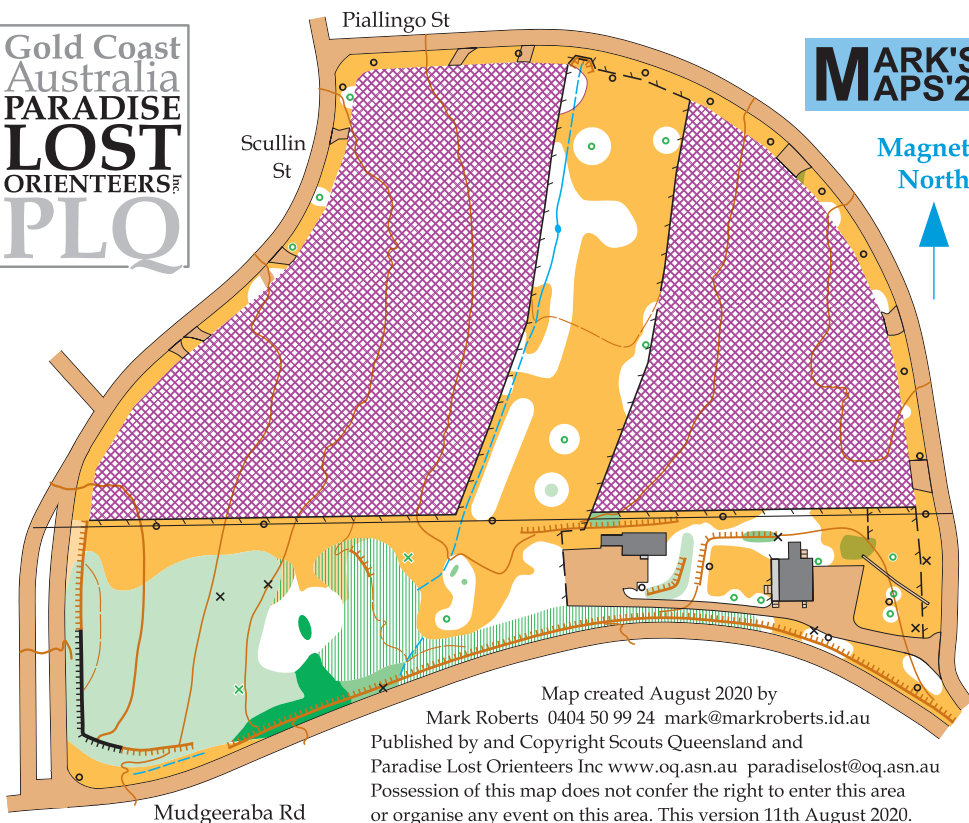


- Contour (5m); Index contour (25m)
- Formline; Slope line; Earth wall
- Earth bank: Low, High
- Erosion gully: Shallow, Deep
- Rock face: Passable, Impassable
- Stream; Ditch; Narrow marsh
- Open land; Rough open land
- Bush: Run, Jog, Walk, Fight
- Undergrowth: Jog, Walk
- Tree; Bush; Stump; Impassable hedge
- Area that may not be entered (Garden)
- Power line, minor
- Fence: Minor, Passable, Impassable
- Building (Do not enter); Canopy; Pillars
- High pole, Power pylon, Other object
- Road, car park, area with traffic
- Paved area without traffic; Step or edge; Stairs
- Out of bounds

Gold Coast
Australia
PARADISE
LOST
ORIENTEERS
PLQ

MARK'S
MAPS'20

Magnetic
North



Map created August 2020 by

Mark Roberts 0404 50 99 24 mark@markroberts.id.au

Published by and Copyright Scouts Queensland and

Paradise Lost Orienteers Inc www.oq.asn.au paradiselost@oq.asn.au

Possession of this map does not confer the right to enter this area or organise any event on this area. This version 11th August 2020.